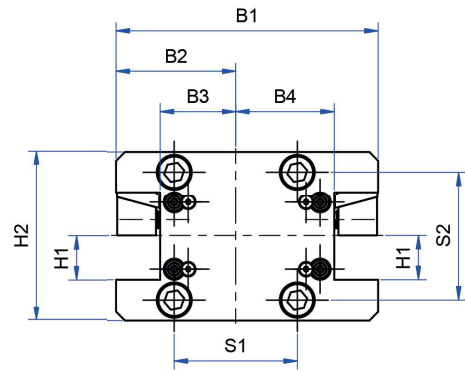
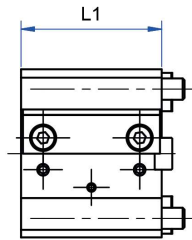
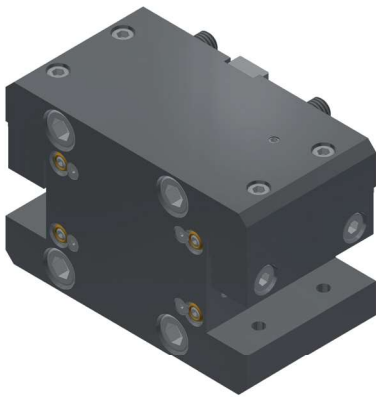


Toolholder with square-multi-receptacle

Manche à outils avec porte-outils multiple carré



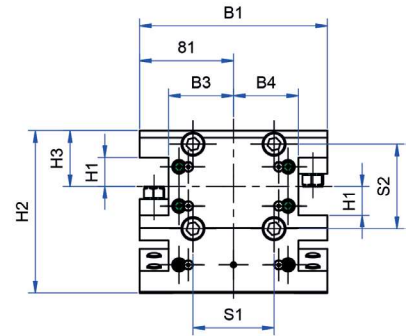
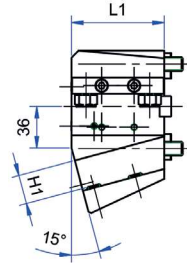
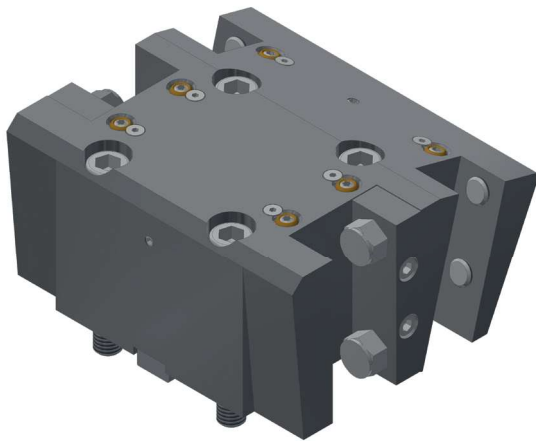
Bestell-Nr. Order no. Référence	H1	H2	B1	B2	B3	B4	L1	S1	S2
AW.103.065.25.755	25	96	149	68	43	56	80	70	73



BMT	BMT65
Doosan	PUMA 2100/2600 (M,LM,MS,LMS) PUMA 2100/2600 (Y,LY,SY,LSY) PUMA 300 (M,MS,MB,MC) PUMA 3100 (M,LM,LY,XLM,XLY,ULM,ULY) PUMA MX2000/2500 PUMA MX2600 (T,ST), PUMA TT2500 (MS/SY) PUMA V400 (M) PUMA VT450 (M,2SP)
Haas	ST 20Y, ST 35Y, DS-30Y
Hwacheon	Cutex-240/HI-TECH200/T2-Series HI-TECH300/400 VT-450
Hyundai	L2100SY SKT-200/250TTSY SKT-250/300 (L,M) SKT-250/300 (MS)
Maxsin	BMT65
SMEC/Samsung	SL 25/SL 35
Tongtai	TMT2000
Victor	Vturn-A26 (YSCM)



Toolholder with square-multi-receptacle
Manche à outils avec porte-outils multiple carré

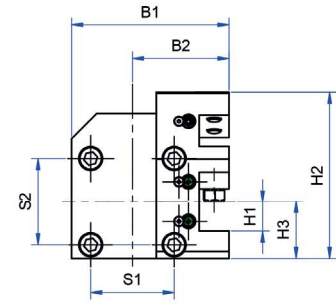
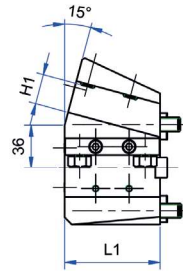
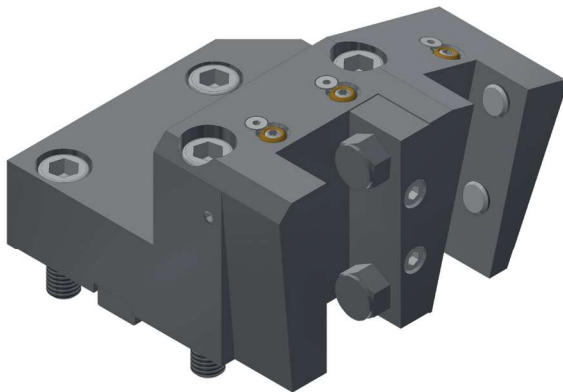


Bestell-Nr. Order no. Référence	H1	H2	H3	B1	B2	B3	B4	L1	S1	S2
AW.103.065.25.756	25	139,873	48	162	81	56	56	80	70	73

7

BMT	BMT65
Doosan	PUMA 2100/2600 (M,LM,MS,LMS) PUMA 2100/2600 (Y,LY,SY,LSY) PUMA 300 (M,MS,MB,MC) PUMA 3100 (M,LM,LY,XLM,XLY,ULM,ULY) PUMA MX2000/2500 PUMA MX2600 (T,ST), PUMA TT2500 (MS/SY) PUMA V400 (M) PUMA VT450 (M,2SP)
Haas	ST 20Y, ST 35Y, DS-30Y
Hwacheon	Cutex-240/Hi-TECH200/T2-Series Hi-TECH300/400 VT-450
Hyundai	L2100SY SKT-200/250TTSY SKT-250/300 (L,M) SKT-250/300 (MS)
Maxsin	BMT65
SMEC/Samsung	SL 25/SL 35
Tongtai	TMT2000
Victor	Vturn-A26 (YSCM)

Toolholder with square-multi-receptacle
 Manche à outils avec porte-outils multiple carré



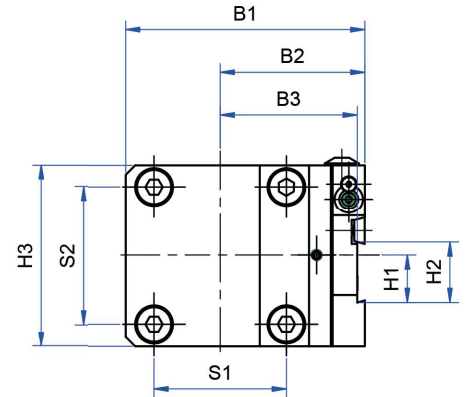
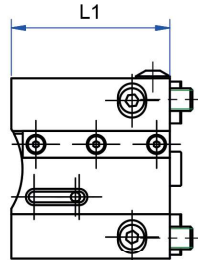
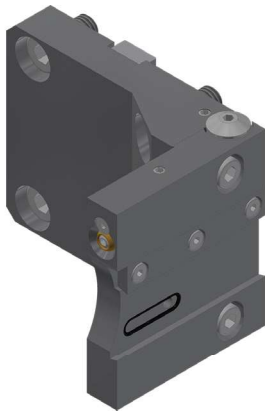
Bestell-Nr. Order no. Référence	H1	H2	H3	B1	B2	L1	S1	S2
AW.103.065.25.753	25	139,873	48	132	81	80	70	73

7

BMT	BMT65
Doosan	PUMA 2100/2600 (M,LM,MS,LMS) PUMA 2100/2600 (Y,LY,SY,LSY) PUMA 300 (M,MS,MB,MC) PUMA 3100 (M,LM,LY,XLM,XLY,ULM,ULY) PUMA MX2000/2500 PUMA MX2600 (T,ST), PUMA TT2500 (MS/SY) PUMA V400 (M) PUMA VT450 (M,2SP)
Haas	ST 20Y, ST 35Y, DS-30Y
Hwacheon	Cutex-240/Hi-TECH200/T2-Series HI-TECH300/400 VT-450
Hyundai	L2100SY SKT-200/250TTSY SKT-250/300 (L,M) SKT-250/300 (MS)
Maxsin	BMT65
SMEC/Samsung	SL 25/SL 35
Tongtai	TMT2000
Victor	Vturn-A26 (YSCM)



Front cut-off toolholder
Porte-outils de tronçonnage frontal



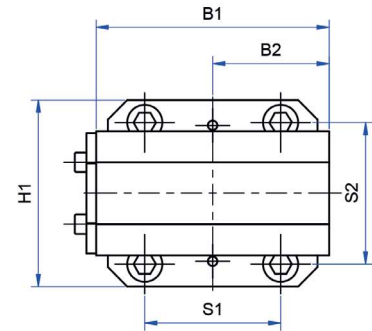
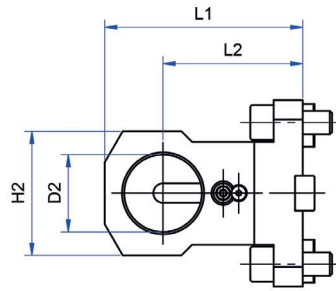
Bestell-Nr. Order no. Référence	H1	H2	H3	B1	B2	B3	L1	S1	S2
AW.105.065.26.753	25	32	96	126,5	76,5	72,5	84	70	73

7

BMT	BMT65
Doosan	PUMA 2100/2600 (M,LM,MS,LMS) PUMA 2100/2600 (Y,LY,SY,LSY) PUMA 300 (M,MS,MB,MC) PUMA 3100 (M,LM,LY,XLM,XLY,ULM,ULY) PUMA MX2000/2500 PUMA MX2600 (T,ST), PUMA TT2500 (MS/SY) PUMA V400 (M) PUMA VT450 (M,2SP)
Haas	ST 20Y, ST 35Y, DS-30Y
Hwacheon	Cutex-240/Hi-TECH200/T2-Series Hi-TECH300/400 VT-450
Hyundai	L2100SY SKT-200/250TTSY SKT-250/300 (L,M) SKT-250/300 (MS)
Maxsin	BMT65
SMEC/Samsung	SL 25/SL 35
Tongtai	TMT2000
Victor	Vturn-A26 (YSCM)



Cylindrical shank receptacle
Support de tige cylindrique



Bestell-Nr. Order no. Référence	D2	H1	H2	B1	B2	L1	L2	S1	S2
AW.107.265.40.750	40	96	64	120	60	102	72	70	73

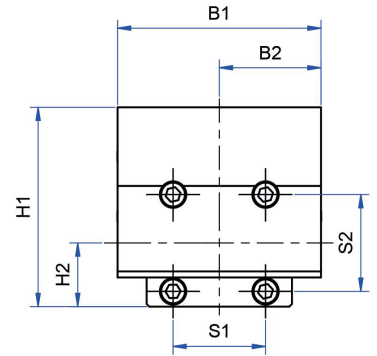
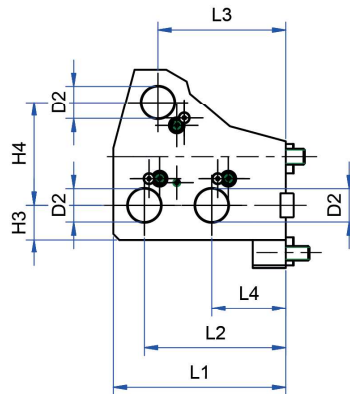
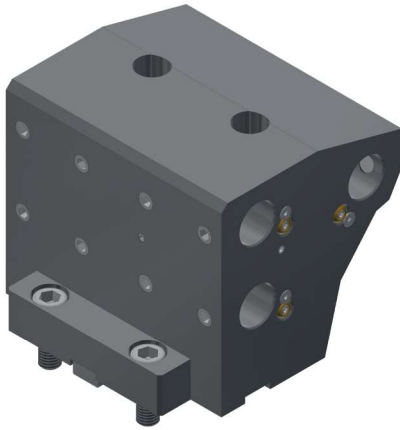


BMT	BMT65
Doosan	PUMA 2100/2600 (M,LM,MS,LMS) PUMA 2100/2600 (Y,LY,SY,LSY) PUMA 300 (M,MS,MB,MC) PUMA 3100 (M,LM,LY,XLM,XLY,ULM,ULY) PUMA MX2000/2500 PUMA MX2600 (T,ST), PUMA TT2500 (MS/SY) PUMA V400 (M) PUMA VT450 (M,2SP)
Haas	ST 20Y, ST 35Y, DS-30Y
Hwacheon	Cutex-240/Hi-TECH200/T2-Series Hi-TECH300/400 VT-450
Hyundai	L2100SY SKT-200/250TTSY SKT-250/300 (L,M) SKT-250/300 (MS)
Maxsin	BMT65
SMEC/Samsung	SL 25/SL 35
Tongtai	TMT2000
Victor	Vturn-A26 (YSCM)





Cylindrical shank receptacle
Support de tige cylindrique



Bestell-Nr. Order no. Référence	D2	H1	H2	H3	H4	B1	B2	L1	L2	L3	L4	S1	S2
AW.107.265.25.756	25	151	48	26	77,82	154	77	130,5	107	96,755	56	70	73

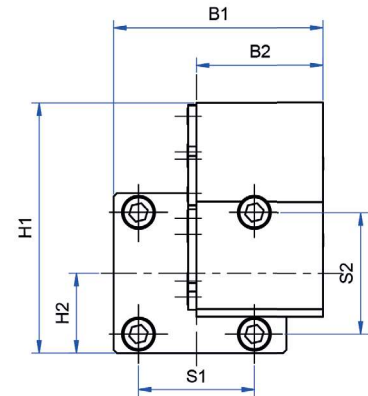
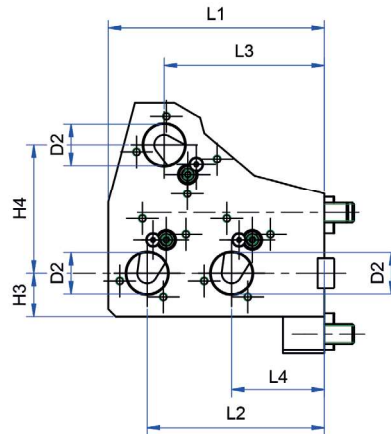
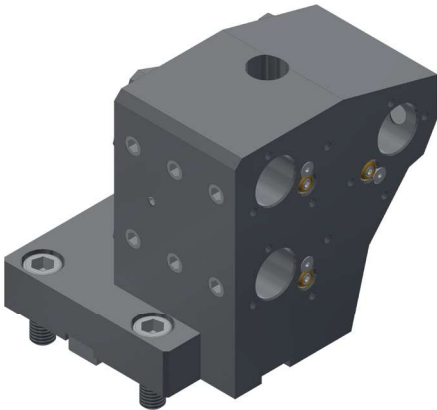
7

BMT	BMT65
Doosan	PUMA 2100/2600 (M,LM,MS,LMS) PUMA 2100/2600 (Y,LY,SY,LSY) PUMA 300 (M,MS,MB,MC) PUMA 3100 (M,LM,LY,XLM,XLY,ULM,ULY) PUMA MX2000/2500 PUMA MX2600 (T,ST), PUMA TT2500 (MS/SY) PUMA V400 (M) PUMA VT450 (M,2SP)
Haas	ST 20Y, ST 35Y, DS-30Y
Hwacheon	Cutex-240/Hi-TECH200/T2-Series Hi-TECH300/400 VT-450
Hyundai	L2100SY SKT-200/250TTSY SKT-250/300 (L,M) SKT-250/300 (MS)
Maxsin	BMT65
SMEC/Samsung	SL 25/SL 35
Tongtai	TMT2000
Victor	Vturn-A26 (YSCM)





Cylindrical shank receptacle
Support de tige cylindrique



Bestell-Nr. Order no. Référence	D2	H1	H2	H3	H4	B1	B2	L1	L2	L3	L4	S1	S2
AW.107.265.25.753	25	151	48	26	77,82	127	77	130,5	107	96,755	56	70	73



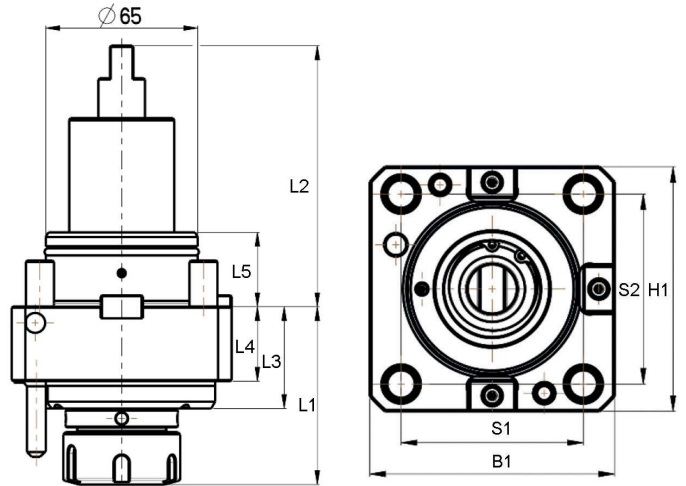
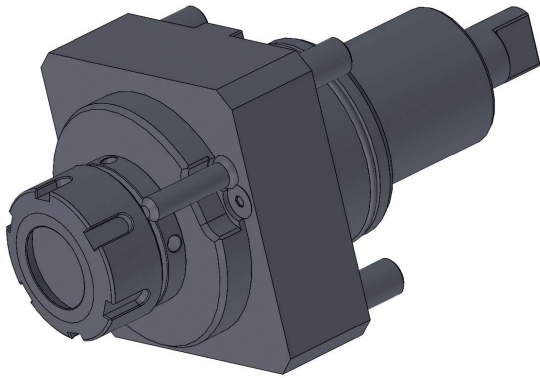
BMT	BMT65
Doosan	PUMA 2100/2600 (M,LM,MS,LMS) PUMA 2100/2600 (Y,LY,SY,LSY) PUMA 300 (M,MS,MB,MC) PUMA 3100 (M,LM,LY,XLM,XLY,ULM,ULY) PUMA MX2000/2500 PUMA MX2600 (T,ST), PUMA TT2500 (MS/SY) PUMA V400 (M) PUMA VT450 (M,2SP)
Haas	ST 20Y, ST 35Y, DS-30Y
Hwacheon	Cutex-240/HI-TECH200/T2-Series HI-TECH300/400 VT-450
Hyundai	L2100SY SKT-200/250TTSY SKT-250/300 (L,M) SKT-250/300 (MS)
Maxsin	BMT65
SMEC/Samsung	SL 25/SL 35
Tongtai	TMT2000
Victor	Vturn-A26 (YSCM)





Axial drilling and milling head for external cooling

Tête d'alésage et de fraisage axiale pour refroidissement externe



Bestell-Nr. Order no. Référence	B1	H1	S1	S2	L1	L2	L3	L4	L5	n max. min-1	T max. Nm
AW.221.065.20.751	94	94	70	73	76,3	112	43,7	32	32	6000	70

Typ: 470E | ER 32
 DCONWS: 3 - 20
 CP: 20 bar

7

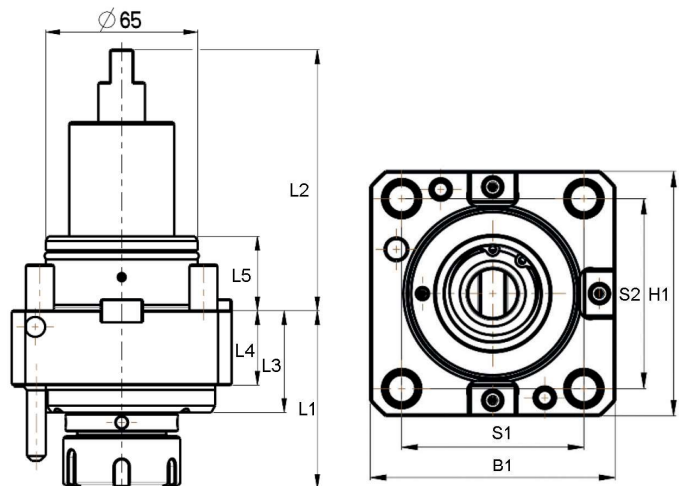
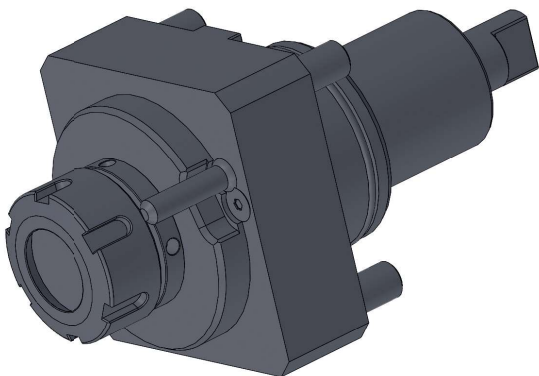
BMT	BMT65
Doosan	PUMA 2100/2600 (M,LM,MS,LMS) PUMA 2100/2600 (Y,LY,SY,LSY) PUMA 300 (M,MS,MB,MC) PUMA 3100 (M,LM,LY,XLM,XLY,ULM,ULY) PUMA MX2000/2500 PUMA MX2600 (T,ST), PUMA TT2500 (MS/SY) PUMA V400 (M) PUMA VT450 (M,2SP)
Haas	ST 20Y, ST 35Y, DS-30Y
Hwacheon	Cutex-240/Hi-TECH200/T2-Series Hi-TECH300/400 VT-450
Hyundai	L2100SY SKT-200/250TTSY SKT-250/300 (L,M) SKT-250/300 (MS)
Maxsin	BMT65
SMEC/Samsung	SL 25/SL 35
Tongtai	TMT2000
Victor	Vturn-A26 (YSCM)





Axial drilling and milling head for internal and external cooling

Tête d'alésage et de fraisage axiale pour refroidissement interne et externe



Bestell-Nr. Order no. Référence	B1	H1	S1	S2	L1	L2	L3	L4	L5	n max. min-1	T max. Nm
AW.221.065.20.756	94	94	70	73	76,3	112	43,7	32	32	6000	70

Typ: 470E | ER 32
 DCONWS: 3 - 20
 CP: 20 bar



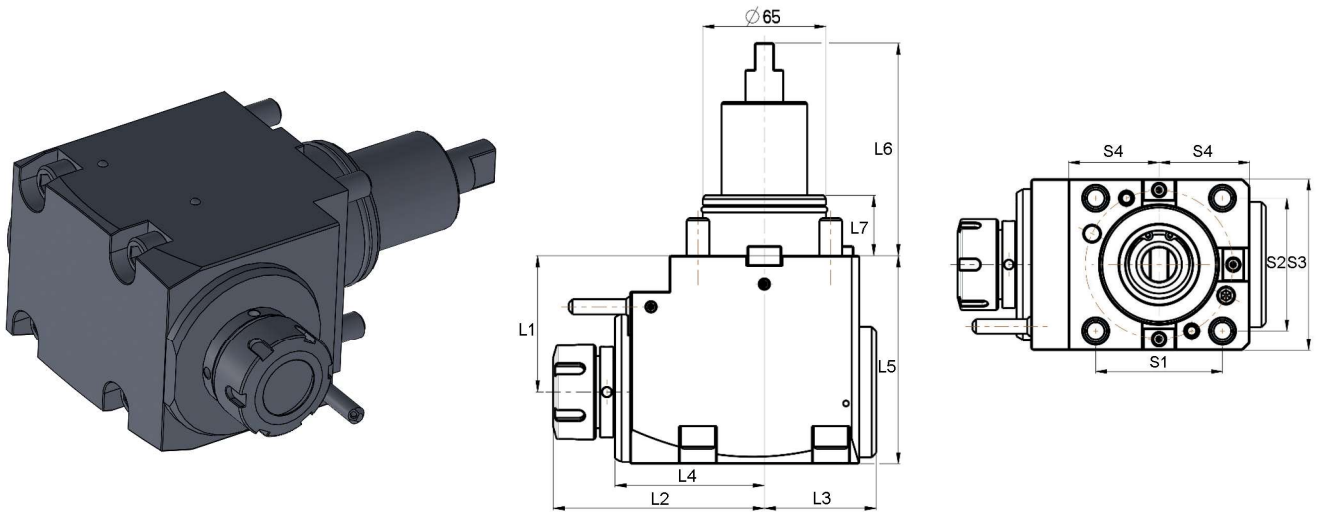
BMT	BMT65
Doosan	PUMA 2100/2600 (M,LM,MS,LMS) PUMA 2100/2600 (Y,LY,SY,LSY) PUMA 300 (M,MS,MB,MC) PUMA 3100 (M,LM,LY,XLM,XLY,ULM,ULY) PUMA MX2000/2500 PUMA MX2600 (T,ST), PUMA TT2500 (MS/SY) PUMA V400 (M) PUMA VT450 (M,2SP)
Haas	ST 20Y, ST 35Y, DS-30Y
Hwacheon	Cutex-240/HI-TECH200/T2-Series HI-TECH300/400 VT-450
Hyundai	L2100SY SKT-200/250TTSY SKT-250/300 (L,M) SKT-250/300 (MS)
Maxsin	BMT65
SMEC/Samsung	SL 25/SL 35
Tongtai	TMT2000
Victor	Vturn-A26 (YSCM)





Radial drilling and milling head for external cooling

Tête d'alésage et de fraisage radiale pour refroidissement externe



Bestell-Nr. Order no. Référence	S1	S2	S3	S4	L1	L2	L3	L4	L5	L6	L7	n max. min-1	T max. Nm
AW.221.265.20.751	70	73	94	50	72	111,3	59	78,7	110	112	32	6000	70

7

Typ: 470E | ER 32
 DCONWS: 3 - 20
 CP: 20 bar

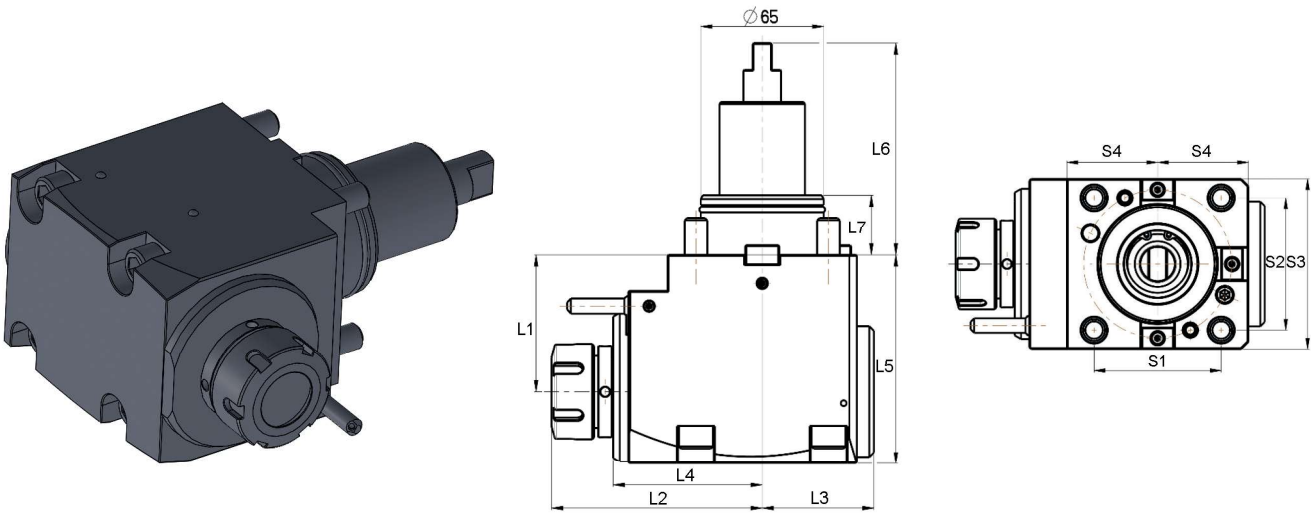
BMT	BMT65
Doosan	PUMA 2100/2600 (M,LM,MS,LMS) PUMA 2100/2600 (Y,LY,SY,LSY) PUMA 300 (M,MS,MB,MC) PUMA 3100 (M,LM,LY,XLM,XLY,ULM,ULY) PUMA MX2000/2500 PUMA MX2600 (T,ST), PUMA TT2500 (MS/SY) PUMA V400 (M) PUMA VT450 (M,2SP)
Haas	ST 20Y, ST 35Y, DS-30Y
Hwacheon	Cutex-240/Hi-TECH200/T2-Series HI-TECH300/400 VT-450
Hyundai	L2100SY SKT-200/250TTSY SKT-250/300 (L,M) SKT-250/300 (MS)
Maxsin	BMT65
SMEC/Samsung	SL 25/SL 35
Tongtai	TMT2000
Victor	Vturn-A26 (YSCM)





Axial drilling and milling head for internal and external cooling

Tête d'alésage et de fraise axiale pour refroidissement interne et externe



Bestell-Nr. Order no. Référence	S1	S2	S3	S4	L1	L2	L3	L4	L5	L6	L7	n max. min-1	T max. Nm
AW.221.265.20.756	70	73	94	50	72	111,3	59	78,7	110	112	32	6000	70

Typ: 470E | ER 32
 DCONWS: 3 - 20
 CP: 20 bar



BMT	BMT65
Doosan	PUMA 2100/2600 (M,LM,MS,LMS) PUMA 2100/2600 (Y,LY,SY,LSY) PUMA 300 (M,MS,MB,MC) PUMA 3100 (M,LM,LY,XLM,XLY,ULM,ULY) PUMA MX2000/2500 PUMA MX2600 (T,ST), PUMA TT2500 (MS/SY) PUMA V400 (M) PUMA VT450 (M,2SP)
Haas	ST 20Y, ST 35Y, DS-30Y
Hwacheon	Cutex-240/HI-TECH200/T2-Series HI-TECH300/400 VT-450
Hyundai	L2100SY SKT-200/250TTSY SKT-250/300 (L,M) SKT-250/300 (MS)
Maxsin	BMT65
SMEC/Samsung	SL 25/SL 35
Tongtai	TMT2000
Victor	Vturn-A26 (YSCM)



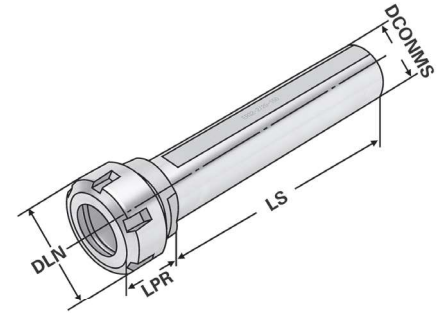


ISO 15488 (DIN 6499) System ER

Collet chucks with straight shank with with clamping surface for collets ISO 15488 (DIN 6499) ER-system
Mandrins à pinces à queue cylindrique avec surface de serrage pour pinces ISO 15488 (DIN 6499) système ER



Verwendung:
Zur Aufnahme von Werkzeugen mit Zylinderschaft in Spannzangen.
Application:
For mounting straight-shank tools in collets.
Application:
Pour le serrage d'outils avec queue cylindrique dans des pinces de serrage.



Bestell-Nr. Order no. Référence	DCONWS	Spannbereich Capacity Capacité	Typ	LS	LPR	DLN	DRVS	CND	THID
120.02.04.10	16	1 – 10	426E ER 16	150	30	32	19	9	M10 x 1,5
120.02.04.16	20	1 – 16	430E ER 25	150	40	42	27	11	M12 x 1,5
120.02.04.20	32	2 – 20	470E ER 32	150	35	50	32	19	M20 x 1,5
120.02.04.20.1	40	2 – 20	470E ER 32	120	35	50	36	19	M20 x 1,5

Durchgangsbohrung für Innenkühlung vorhanden.
Through hole for internal cooling provided.
Trou débouchant disponible pour arrosage interne.

Lieferumfang: Inkl. Spannmutter
Delivery: Clamping nuts
Livraison: Ecrou de serrage

7

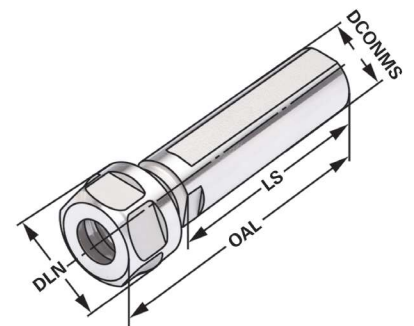
Spannfutter mit Zylinderschaft für Spannzangen

ISO 15488 (DIN 6499) System ER

Collet chucks with straight shank for collets ISO 15488 (DIN 6499) ER-system
Mandrins à pinces à queue cylindrique pour pinces ISO 15488 (DIN 6499) système ER



Verwendung:
Zur Aufnahme von Werkzeugen mit Zylinderschaft in Spannzangen.
Application:
For mounting straight-shank tools in collets.
Application:
Pour le serrage d'outils avec queue cylindrique dans des pinces de serrage.



Bestell-Nr. Order no. Référence	DCONWS	Spannbereich Capacity Capacité	Typ	DLN	LS	OAL	DRVS	CND	THID
120.02.A.07	20	1 – 07	4008E ER 11	19	50	67,5	17	7	-
120.02.A.07.1	20	1 – 07	4008E ER 11	19	70	87,5	17	7	-
120.02.A.10	20	1 – 10	426E ER 16	28	70	96,0	17	10	7/16" 20 UNF
120.02.A.13	25	1 – 13	428E ER 20	34	50	74,0	22	13	9/16" 18 UNF

Sechskantmutter
Hexagonal clamping nut
Écrous hexagonal

Durchgangsbohrung für Innenkühlung vorhanden.
Through hole for internal cooling provided.
Trou débouchant disponible pour arrosage interne.

Hook wrench with pin 45-50 | ER32 | 2-20 |
Clé à ergot rond 45-50 | ER32 | 2-20 |



Bestell-Nr. Order no. Référence	Spannbereich Capacity Capacité
AW.SE4550	45 - 50 (ER 32)

Spannschlüssel für Spannmuttern System ER

Wrenches for clamping nuts ER-system
Clés de serrage pour écrous de serrage système ER



Bestell-Nr. Order no. Référence	Spannbereich Capacity Capacité
02.20	2 - 20 (ER 32)